

New England Science Fiction Association, Inc.  
Box G, MIT Branch Post Office  
Cambridge, MA 02139-0910  
USA

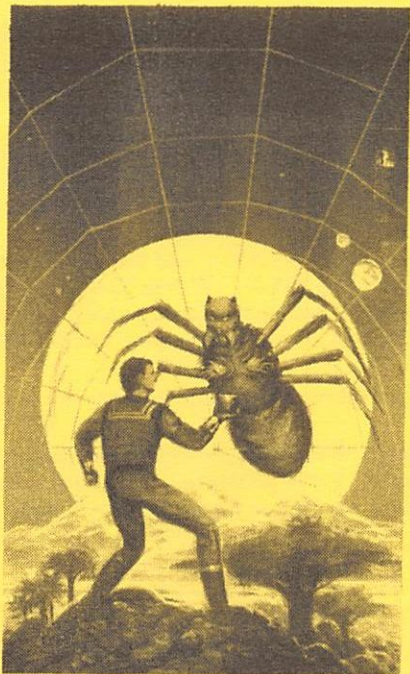


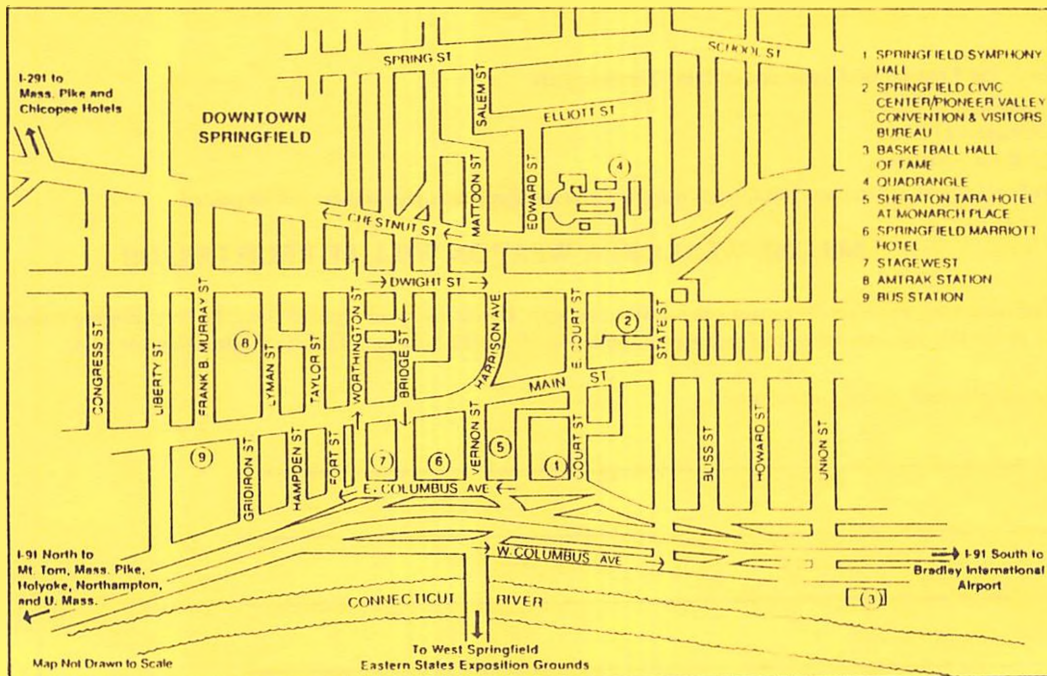
Illustration by [unreadable] © [unreadable]

35  
George Flynn, FN  
Box 1069  
Kendall Square Station  
Cambridge, MA 02142

What? You forgot your Quickie Sheet??  
You'd better have a photo ID!!

FIRST CLASS MAIL

## DIRECTIONS TO BOSKONE



### Directions to Springfield and Parking Information

Springfield is located at the intersection of Routes 90 (a.k.a. the Mass Pike) and I-91, about 90 miles west of Boston. The hotels are located just off I-91 (Exit 7), and are adjacent to Columbus Ave., Vernon St., and Main St. You can see the hotel/mall complex from Routes 91 and 291—the BayBank Tower at the far end of the mall is particularly visible from the highways.

1. **By Car from the East.** Take the Mass Pike (I-90) to Exit 6. Go through the tollbooth to the traffic light, and turn left onto I-291. Follow this road to I-91 (Exit 1A). Take I-91 South a few hundred yards to Exit 7 (the next exit). [Continue with Paragraph 4]
2. **By Car from the West.** Take the Mass Pike to Exit 4, then follow I-91 South to Exit 7. [Continue with Paragraph 4]
3. **By Car from the North.** Take I-91 South to Exit 7. [Continue with Paragraph 4]
4. At the traffic light at the end of the ramp, turn left onto Vernon Street and cross under I-91 to another traffic light. To go to the Marriott, turn left onto E. Columbus Ave. [and continue with Paragraph 6]. To go to the Tara, go straight [and continue with Paragraph 7].
5. **By Car from the South.** Take I-91 North to Exit 6 Go straight ahead onto E. Columbus Ave. at the traffic light at the end of the ramp, then follow the road as it bears right and then left and continue to the next traffic light. To go to the Marriott, go straight [and continue with Paragraph 6]. To go to the Tara, turn right onto Vernon Street [and continue with Paragraph 7].
6. Go up the ramp (marked Marriott and Baystate West) on the right side of the street and enter the parking garage. The clearance is 6'4", and levels B and C connect directly to the hotel elevators.
7. Go ½ block and turn right into a tunnel through the building. The ramp to the Tara parking garage is on the left near the far end of the tunnel.
8. **By Air.** Fly into Bradley International Airport. Airlines serving Bradley include Piedmont, Eastern, Northwest, United, and American. Bradley is located in Connecticut and serves both Hartford and Springfield. Take an airport bus to the hotels. The bus costs \$6 and takes 30 minutes. It is run by Peter Pan Bus Lines and leaves the airport every two hours from 7:15AM to 5:15PM, and also at 6:50PM, 9PM, and 10:20PM.
9. **By Train.** Springfield has Amtrak service from Boston, Washington (via Baltimore, Philadelphia, and New York), and Chicago (via Toledo, Cleveland, and Buffalo), as well as connections from many other cities. The station is slightly less than ½ mile from the hotels, and they are just beyond the BayBank Tower visible ahead and to your right when you exit from the station. On leaving the station turn right, walk along Lyman Street to the light at the end of the block, and turn left onto Main Street. [Continue with Paragraph 11]
10. **By Bus.** Springfield is served by four long-distance bus companies: Bonanza (with direct service from Albany and Providence), Greyhound (with direct service from New York and White River Junction), Peter Pan (with direct service from Boston, Buffalo, and New York), and Vermont Transit (with direct service from Burlington and New York). The station is about 0.4 mile from the hotels. On leaving the station turn right on Main Street and walk under the stone railroad bridge. In the distance and just to your right, you will see the BayBank Towers and Baystate West Mall. [Continue with Paragraph 11]
11. Go straight for 4 blocks to Vernon Street (just beyond a second-story connection between buildings). Turn right and walk one block—the Tara is on your left and the Marriott is on your right.
12. **Parking.** Parking in the Marriott Garage is currently \$4.00 per day for registered guests and \$10.00 per day for others. The Marriott Garage is part of the Baystate West Mall Garage. Parking in the Tara garage is \$4.00 per day for registered guests and \$10.00 per day for others. There are several parking lots near the hotels. Parking at either the Civic Center (item 2 on the map) or at the Stagemart Garages (item 7 on the map) is only \$2.00 per day, and both are a short walk from the hotels.

# Boskone XXV Progress Report

January 29-31, 1988

Springfield, Massachusetts

Guest of Honor  
Greg Bear

Official Artist  
David Mattingly

Special Speaker  
Ellen Asher

## The Co-Chairs Speak

After a few years of enormous growth, NESFA is refocusing Boskone. Boskone XXV will be more like the Boskones of 10 years ago than the most recent Boskones. You will find a stronger emphasis on literary science fiction, on science, and on art. You will not find extravagant movie schedules, game rooms, or a 24-hour, structured convention. We have reintroduced older fannish traditions, like the Fan Lounge and the Banquet. Boskone will also start later on Friday, with Registration opening at 5PM, Program starting at 6PM, and the Hucksters' Rooms opening at 7PM. We hope you will find Boskone a friendlier, quieter convention than it has been recently. We also hope you'll find it a little easier to meet fans from your area.

## Hotels

**Sheraton Tara Hotel at Monarch Place.** Our headquarters hotel boasts 300 deluxe guest rooms, 2 restaurants, health club, pool and 2 hot tubs. Registration, Art Show, a Hucksters' Room, some Program, and DragonsLair (children's activities) will all be on the third floor of the Tara.

**Springfield Marriott.** Adjacent to the Baystate West Mall and across Vernon St. from the Tara, this hotel has 265 guest rooms, Albert's Restaurant with its outstanding Sunday brunch, and a large pool/hot tub area. Programming, a Hucksters' Room, the Con Suite, Babysitting, Banquet, and the Meet-the-VIPs will run in the Marriott.

**Reservations.** Hotel reservations for Boskone XXV can be made only with the hotel registration forms—please do not contact the hotels directly. If you haven't received your form yet, call 617-625-2311, leave your name and address, tell us that you haven't gotten a hotel form yet, and we'll send you one. Up to four people may share a room. All major credit cards are accepted. If you will be arriving after 6PM, you should guarantee your reservation. To pay by cash or check, you must send us a deposit check for one night's lodging. For suites, please write to us.

**Check-In.** Check-in begins at 3PM. Any change, such as the name of a roommate or the need for an early check-in, should be received by the hotel three days before the convention.

**Money.** If you plan to pay for your stay in cash, you cannot charge items, even phone calls, to your room. If you give the hotel money when you check in, you may charge against the amount deposited, but not above it. Guests of the hotel may cash one check per day with two valid IDs.

Local banks will be open until 5PM on Friday. There is a BayBank automatic teller machine (on the Cirrus and NYCE networks) in the Baystate West Mall.

**Check-Out.** Check-out time is 1PM (2PM if available). If you are paying by check, you must have a valid driver's license and picture ID. The check must be for the exact amount. You may pre-pay as early as the night before, and retain your key until noon.

## Directions to Springfield and Parking Information

Please see the back side of the Quickie Check-In Form (the wrapper of this Progress Report) for instructions on how to get to Springfield and where to park in town.

## Some Changes in Convention Policies

- ★ No weapon, or anything that looks like one, is allowed at Boskone at any time. This includes carrying of clubs, quarterstaves, lasers, toy zap guns and anything else that *looks* like a weapon. This provision will be strictly enforced. If you violate this rule you will be told to leave the convention—your membership fee will not be refunded.

Please remember: if in doubt, ask us, preferably before the con.

- ★ You will need your badge to get into all convention activities.

- ★ All convention function rooms will close down at 2AM, including the Con Suite and filing rooms. This is to give the committee, the hotel, and the attendees a few hours of quiet time. This means that you will need to leave the function floors at that time.
- ★ We would prefer that you not wear costumes. The hotel managers they have reserved the right, in consultation with the committee, to refuse service to people wearing "indecent" costumes or costumes which may damage furniture. In addition, the Upper Crust restaurant in the Tara has a dress code.
- ★ Due to some flagrant abuses of our lost badge policy over the last few years (people claiming to have "lost" their badges less than an hour after arriving at Boskone), it will be much harder and more expensive to replace a lost badge. See the Lost Badge section under Registration.

## How to Spend Money at the Con

- ★ Cash is welcome everywhere (US funds only).
- ★ Payments to NESFA Sales, Registration, and the Art Show may also be made with checks (personal, cashier's, or traveler's) or credit cards (MasterCard or VISA).  
We will require two pieces of ID for personal checks, one of which must be a photo ID. We reserve the right to hold art work or merchandise for later shipment pending the clearance of personal checks.
- ★ Boskone will not cash checks, however the hotels will cash checks for registered guests.

## Information

The Information booth will be located in the Assembly area, in the Marriott, near the Grand Ballroom. Information will be open:

Friday	Saturday	Sunday
6PM—10PM	10AM—6PM	10AM—4PM

## Art Show

The Boskone Art Show is the largest Science Fiction and Fantasy art show on the East Coast. This year's show will be held in the Grand Tara Ballroom of the Tara. There will be about 100 panels of artwork, with some tables for 3-D art, and (for the first time at Boskone) a Print Shop where multiple copies of reproductions will be for sale.

Before bidding, either by written bid or at the auction, you must register to bid at the Art Show Desk. When you register, you will be given a copy of the complete rules for the Art Show and the Print Shop.

Sale is normally by written bid. Bidding ends at noon on Sunday and those pieces which received eight written bids will be auctioned at 1:30PM on Sunday. All purchases must be picked up between 1PM and 4PM on Sunday. Print Shop purchases must be taken away upon purchase.

Print Shop. Boskone will run its first Print Shop, in part of the Tara Grand Ballroom. The hours for the Print Shop are the same as the hours for the Art Show, stated below.

Photography. To protect the artist's rights, no photography will be allowed in the Art Show except for official convention photographs and supervised press photography.

Awards. All convention attendees are eligible to vote for the Best Professional Artist and Best Amateur Artist awards. Ballots will be available at the Art Show Desk and must be turned in by 10PM on Saturday.

Art Show and Print Shop hours are as follows:

Friday	Saturday	Sunday	
8PM—10PM	10AM—10PM	10AM—Noon	Open
		Noon—1PM	Closed
		1PM—4PM	Art Show Sales Open
		1PM—4PM	Print Shop Open
		1:30PM—3PM	Auction

## Babysitting

Babysitting is for kids less than five years old. If your child is five or older s/he should go to DragonsLair during the day (older children are welcomed in Babysitting at night). Children must be convention members to use Babysitting, but there is no other charge. Babysitting will be in the Marriott on a sleeping room floor, and will be open:

Friday	Saturday	Sunday
6:00PM—Midnight	9:00AM—5:00PM	7:00PM—Midnight
		9:00AM—4:00PM

Please observe these times! We will provide lunch, but not supper, so be back at Babysitting by 5:00PM on Saturday. Please bring your own diapers. By law, we cannot handle sick children; do not bring them to Babysitting.

## Banquet

Yes, folks, you read that right. Boskone will have a banquet in the Grand Ballroom of the Marriott. Seating begins at 7PM on Saturday, and we plan to begin serving at 7:30PM. See the Banquet order form on Page 8 for a list of the entrées.

All entrées include appetizer, salad, vegetable, potato, rolls & butter, dessert, beverage, and after-dinner mints. The cost is \$17, which includes tax and gratuities. All banquet tickets must be purchased in advance; we are limited to 300. If you'd like to attend the Banquet, please complete the Banquet part of the form on Page 8, include a check, and send it to the NESFA box, by January 10. You will pick up your tickets at Registration—look for the table marked "Banquet."

We will be pre-assigning seats; there are ten seats per table. If you want to sit with a group of friends, send in your ticket request in one order and say you want to sit together. The initial seating plan will be posted at the Banquet table in Registration. Based upon the requests of a number of early respondents to the Banquet, there will be no smoking during the Banquet itself.

After the Banquet, Greg Bear will give his Guest of Honor speech, and all the awards (Skylark, Gaughan, etc.) will be given out. We will open the adjacent function rooms after the Banquet, so those not attending the Banquet will be able to attend the speeches and award ceremony.

## The Bear Facts

We will have a quiz this year, called "The Bear Facts," a test of your knowledge about the writings of Greg Bear. The winner of the quiz wins a free Banquet ticket and a seat at the head table. Look for the quiz in Registration and Information. The quiz must be turned in to Information by noon on Saturday. The winner will be announced at Information at 4PM Saturday.

## Club and Worldcon Bidders' Tables

Club/bid tables provide a way for club members to promote their clubs/bids and to meet fen from their areas. These tables will run in the Marriott Assembly Area, near Information. If you are part of a club, a bid committee, or a Worldcon committee and you're interested in running a table, please write to us by January 15 so we can reserve space for you.

## Con Suite

The Con Suite is the site of the Boskone-sponsored party where fen can meet, talk, etc. The Con Suite will return to a sleeping-floor suite, be very laid back, and be open as follows:

Friday	Saturday	Sunday
9PM—2AM	9PM—2AM	TBA

## DragonsLair

DragonsLair is programming for kids aged five to twelve. Participating kids must be convention members. Please note that lunch is **not** provided. DragonsLair will run in two rooms in the Tara. One room will be for talking and watching video tapes. The other room will be for planned activities, like building spaceships, costume-making, playing games, etc. If you have suggestions for DragonsLair activities, please drop us a line. DragonsLair hours are:

Saturday	Sunday
10:00AM—6:00PM	10:00AM—4:00PM

## Fan Lounge

A Fan Lounge will run out of the Executive Board Room in the Tara. The lounge will feature comfortable chairs, fanzines, and NESFA memorabilia. We would appreciate loans of fannish material—any spare copies of *The Mimeo Man* out there? The lounge will be open:

Friday	Saturday	Sunday
6PM—9PM	10AM—6PM	10AM—4PM

## Filksings

We will be running both an unstructured “Round Robin” filk and a structured “Group Filk.” A moderator and NESFA Hymnals will be available at the Group Filk. Filksinging will start at about 10PM in the function rooms of the Marriott. Filking will close down at about 2AM.

## Hucksters' Rooms

There will be two Hucksters' Rooms at the next Boskone. One will be in the Springfield Ballroom of the Marriott, and the other one will be in part of the Grand Tara Ballroom. The rooms will have about 75 tables total, and autographing will run in both rooms. The rooms are already sold out. A detailed Huckster directory will be available at the con, so you can more easily find what you're looking for. The rooms will be open:

Friday	Saturday	Sunday
7:00PM—9:00PM	10:00AM—6:00PM	10:00AM—3:00PM

## Meet the VIPs Party

There will be a Meet the VIPs Party Friday night from 8:30PM to 10:30PM, in sections A & B of the Marriott Grand Ballroom. We plan to offer autographing, and the chance to meet your favorite writers and artists. We are also setting up a special Hucksters' area for the party, so you can buy books for autographing on the spot.

## Newsletter

Our newsletter (*Helmuth, Speaking for Boskone*) will include last-minute program changes and news that develops during the convention. The first issue will be available on Friday. The newsletters will be found throughout the convention facilities (Information, Freebie Table, etc.). If you have a contribution for *Helmuth*, write it up legibly and leave it at Information.

## Parties

We hope that parties at Boskone will return to being places where people can meet and talk. Boskone will provide a party board where you can list your open party for the coming night. The board will be located in the Marriott, near Information. Alcohol may not be served at open parties, and you will be asked to close down if it is. An open party is one that is open to all convention members, is listed on the party board, and advertises itself openly at the convention. A closed party is not advertised, is “invitational” in nature, and runs behind closed doors. We hope there will be a good mix of both types of parties at Boskone. We will not be seeding parties or listing them in *Helmuth* this year.

## People Mover

Science fiction conventions are run entirely by volunteers. The People Mover allocates volunteers among the many different area that need them. These areas include: Art Show, Registration, Con Suite, Sign Shop, DragonsLair, and Logistics. We need your help to keep Boskone running smoothly, so stop by if you're able to volunteer. People Mover is located in the Suffolk Room of the Tara, and will be open:

Friday	Saturday	Sunday
Noon—8:00PM	9:00AM—7:00PM	9:00AM—6:00PM

We will also need help Thursday night. If you live in the Springfield area, please let us know if you'd be willing to help move the convention in and set up the Art Show.

People who have volunteered before the con will receive a letter from People Mover. If you sign up for People Mover by January 1st, your Registration materials will be sent to People Mover. If you haven't volunteered yet, we'd love to have you. Please write to us at People Mover c/o NESFA. Those who work more than eight hours will receive a gopher's T-shirt, with art by Bob Eggleton.

Before you can work on the convention, you need to sign a legal release form. If you're under 18, your parent or guardian must sign. The form appears on Page 7.

## Press Policy

If you are with the press, please register for the convention like any other attendee. Press Releases are available at Information. Upon publication or broadcast of a story about Boskone, and our receipt of a copy of the publication or broadcast, we will refund your registration fee. If you have any questions, inquire at Information or write to NESFA.

## Program

The Boskone XXV Program will have the theme *The Science Fiction Spectrum: Celebrating the Diversity of Speculative Literature*. The program will center around SF as literature, and will feature art programming, fan panels, author readings, and science and technology panels. Some items currently being planned are the "Logical Fantasy Series" and a look at fantasies in modern settings. At the other end of the spectrum, we will have a US & foreign space program update as well as an exposé of the paranormal in SF. Most program items will be on Saturday and Sunday in the ballrooms of the Marriott and the King George Suite of the Tara.

**Autographing.** Autographing will run in both Hucksters' Rooms during the convention. Check your Pocket Program to see when/where your favorite author or artist will be signing.

**Discussion Groups.** A Discussion Group is a small group of people who sit around and chat about someone or something. To sponsor a Discussion Group, to sign up for one, or for more information, check with Information. Check your Pocket Program for the pre-scheduled talks.

**Films.** Films will be integrated with Main Program this year. Check your Pocket Program for the times and films.

**Punday.** Yes, yet another Punday, a very silly way to end your Boskone, will happen Sunday beginning at about 9:00PM, after Art Show teardown. Here's your chance for "fame and fortune" by out-punning your opponents in front of many of your fellow fen.

**Regency Dance.** Boskone XXV will hold its annual Regency Dance in the Marriott Sunday afternoon. Ladies are requested to wear long skirts or the equivalent, and gentlemen are requested to wear a jacket and tie or the equivalent. Members of either sex may come as ladies or gentlemen. Period dress (early 1800s) is appreciated but not required. Reasonable simulation of period manners is required.

**Trivia Bowl.** There will be a "College Bowl"—style trivia bowl at Boskone this year. There is room for a few teams to sign-up at the convention on a first come, first served basis. There will be a sign up sheet at Information. We would appreciate it if you could preregister for the Trivia Bowl by mailing team info c/o the NESFA box. If you like SF trivia but don't want to be on a team, please send us your toughest questions so we can include them in the game.

## Registration

Registration will be in the King Edward Suite of the Tara. The hours are:

Friday	Saturday	Sunday
5:00PM—10:30PM	9:30AM—3:00PM	10:30AM—2:00PM

**NO ONE WEARING A WEAPON WILL BE REGISTERED!!**

Please bring your Quickie Check-in sheet with you—you'll register much faster that way. If you lose your Quickie sheet, be sure to bring a photo ID.

## Registration

The cost of Babysitting and DragonsLair is included in con membership, so all children who use these services must be convention members. Children under 12 who are with their parents at all times are considered "Kids-In-Tow" and need not purchase memberships.

Preregistered Boskone Staffers, Program Participants, and Helpers will be registered in special areas as follows:

Program Participants	Staff/Committee	Helpers
Hampden Room—Marriott	Hampton—Tara	Suffolk—Tara

**At-The-Door Memberships.** The convention has a limit of 1,800 attendees. If you have friends who are still deciding whether or not to come, they should call the NESFA answering machine (617-625-2311) to see if memberships are still available. If memberships are available, they will cost \$40.00 at the door.

**Lost Badges.** The lost-badge policy has changed for this year. If you lose your badge during the convention:

1. Check with Information in the Marriott to see if it has been turned in there.
2. If it has not been turned in at Information, check the Solutions Table in Registration. If the badge was not turned in there, a replacement will cost you \$20.00.

There will be no lost-badge replacement on Friday. Your first opportunity to purchase a lost badge will be at Registration, Saturday at 9:30AM. This means if you lose your badge on Friday, you will not be able to attend any convention function on Friday night.

3. If you lose your badge a second time, you must re-register for \$40.00.

In short, you will save yourself enormous aggravation if you don't lose your badge.

**Transferring Memberships.** All membership transfers must be done in writing. Write to us before the convention authorizing the transfer. Don't forget to give your transferee your Quickie!

## Scavenger Hunt

Contestants will be sent a list of about 100 items one month prior to Boskone. They will have one month to beg, borrow, or otherwise scrounge the items on this list. Judging will occur at Boskone. The team finding the greatest number of items wins.

Competition will be in two classes: individual teams (comprising 1, 2, or 3 people working together) and club teams (more than 3 people working together). To enter this event, send the name of your team, your class (individual or club), and the address of your team captain to the Scavenger Hunt, c/o the NESFA box, by December 31, 1987. We will send you the complete set of regulations and the list of items to be scavenged.

## NESFA Press Announcement

*Early Harvest* by Greg Bear—the 1988 Boskone book—is a collection of stories and articles by our Guest of Honor. It features a cover by David Mattingly (our Official Artist) and is printed on a low-acid, long-life paper with a high-quality binding. The book costs \$18.90 for a boxed, signed edition and \$9.45 for the unboxed edition—these prices include sales tax. Please note that this volume will not include the Hugo-award-winning "Tangents" as erroneously mentioned in a previous sales flyer.

Boskone XXV T-Shirt will feature art by our Official Artist, David Mattingly. Sizes in male, female, and child styles are small, medium, large, and X-large. Female and child T-shirts must be special-ordered by December 31—please use the on Page 8.

*Five percent Massachusetts state sales tax is collected on all NESFA sales items, except for T-shirts and memberships.* The NESFA Sales Table is located in Tara Hucksters' Room.

Please note that "Boskone" is now a registered service mark of NESFA. Dealers will not be permitted to sell merchandise that would infringe on this mark unless they have negotiated a license with NESFA, just as we will not knowingly allow dealers to sell merchandise that infringes on other valid trademarks.

"Worldcon" and "Hugo" are registered service marks of the World Science Fiction Society.



# Legal Release Form

Send to: NESFA, Box G, MIT Branch PO, Cambridge, MA 02139-0910

I, \_\_\_\_\_ (please print), volunteer to help at Boskone XXV, which is run by the New England Science Fiction Association, Incorporated (NESFA), a Massachusetts non-profit corporation.

I understand that I will not be paid for this work. I further understand that no one is authorized by NESFA and/or the Boskone XXV Committee to make any private offer of payment.

I hereby authorize NESFA and the Boskone XXV Committee, individually and as a group, and all their officers, agents, and servants to authorize emergency medical treatment for me at my own expense if I cannot give informed consent for such treatment.

I hereby release and forever discharge NESFA and the Boskone XXV Committee, individually and as a group, and their officers, agents, and servants from any and all liability and responsibility should I be injured or hurt while in the performance of the duties I have voluntarily undertaken.

I am at least 18 years of age, unless a parent or guardian has signed below.

Signed \_\_\_\_\_ Date \_\_\_\_\_

For Boskone \_\_\_\_\_ Date \_\_\_\_\_

I, \_\_\_\_\_ (please print), the parent or guardian of \_\_\_\_\_, give my approval to help at Boskone XXV, subject to the aforesaid.

Signed \_\_\_\_\_ Date \_\_\_\_\_

## Special Medical Information

Please let us know if you have any allergies or medical conditions which could be effected by medical treatment.

If none, initial here (Parent's initials if under 18) \_\_\_\_\_

Medical Problems/Allergies/Medications \_\_\_\_\_

In Case of Emergency, Contact: \_\_\_\_\_ Date \_\_\_\_\_

## T-Shirt Special Order Form

Send to: NESFA, Box G, MIT Branch P.O., Cambridge, MA 02139-0910

Type of T-Shirt	Price	Small	Medium	Large	X-Large	Total
Male	\$8.00	_____	_____	_____	_____	_____
Female	\$10.00	_____	_____	_____	_____	_____
Child	\$9.00	_____	_____	_____	_____	_____
Amount Enclosed:						_____

Name \_\_\_\_\_

Address \_\_\_\_\_

City \_\_\_\_\_ State \_\_\_\_\_ Zip \_\_\_\_\_

My check is enclosed (Make payable to NESFA)

Charge to my VISA/MasterCard (Circle) Expiration Date: \_\_\_\_\_

Card # \_\_\_\_\_

Signature \_\_\_\_\_

## Banquet Form

Send to: NESFA, Box G, MIT Branch P.O., Cambridge, MA 02139-0910

Quantity	Entrée	Quantity
_____	London Broil with Sherry Mushroom Sauce	_____
_____	Boneless Breast of Chicken Française with White Wine Sauce	_____
_____	New England Broiled Scrod	_____
_____	Vegetarian Entrée	_____
Amount Enclosed:		_____

Name \_\_\_\_\_

Address \_\_\_\_\_

City \_\_\_\_\_ State \_\_\_\_\_ Zip \_\_\_\_\_

My check is enclosed (Make payable to NESFA)

Charge to my VISA/MasterCard (Circle) Expiration Date: \_\_\_\_\_

Card # \_\_\_\_\_

Signature \_\_\_\_\_

# BOSKONE XXV QUICKIE CHECK-IN FORM

## Registration

Registration will be in the King Edward Suite of the Tara. The hours are:

Friday 5:00PM—10:30PM

Saturday 9:30AM—3:00PM

Sunday 10:30AM—2:00PM

If you arrive at Boskone after Registration closes, signs directing you to after-hours registration will be posted.

**NO ONE WEARING A WEAPON WILL BE REGISTERED!!**

Please bring this sheet with you—you'll register much faster that way. If you lose your Quickie sheet, be sure to bring a photo ID. If you don't have a photo ID, you may have to re-register—go immediately to the Solutions Table in Registration for help.

If your address has changed, please correct it here:

Name \_\_\_\_\_

Address \_\_\_\_\_

\_\_\_\_\_

\_\_\_\_\_